



COMMUNITY

Health Connect

Community Health Connect is a cross-sector collaborative in Williamson County set on **improving health outcomes** and **expanding access to resources for local families**.

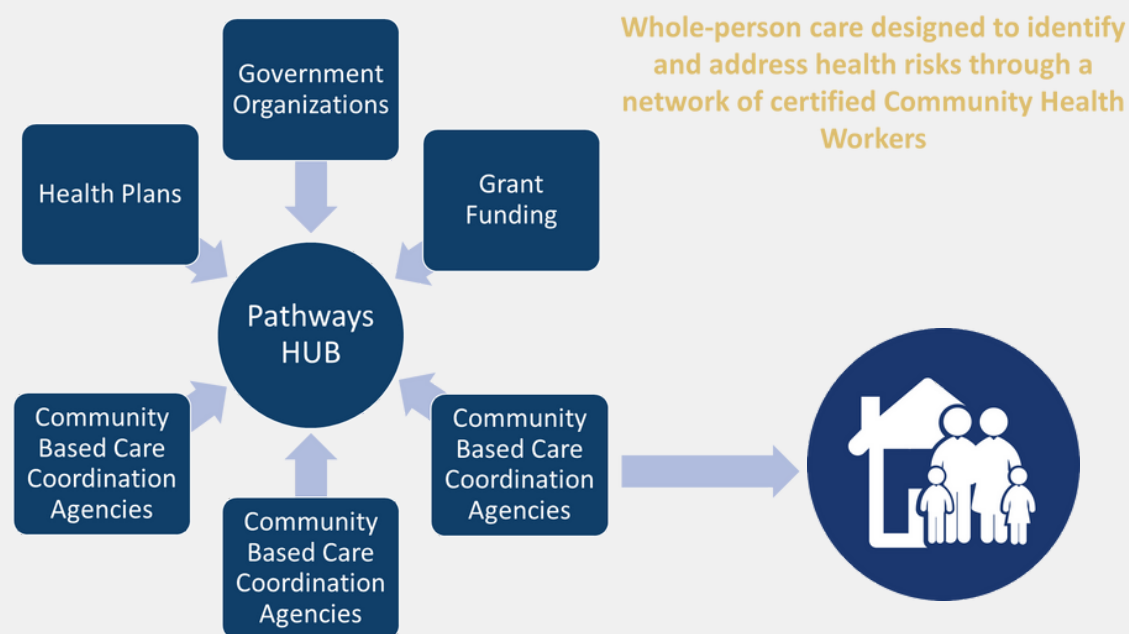
We are part of a cohort of six Accountable Communities of Health in Texas, sponsored by the Episcopal Health Foundation's Texas Accountable Communities for Health Initiative (TACHI).

Community Health Connect is currently building a network of certified community health workers in high-needs communities across the county by launching a Pathways Community HUB.



Pathways Community HUB

The Pathways HUB serves as a connection point for funders, managed care organizations, social services, and families. The goals of this model are to build sustainable funding for social determinants of health within local communities and to create a platform for residents, social services organizations, and health workers to work together on health-related issues.



The Pathways HUB will also coordinate with our local Health District on community needs assessments and improvement plans, and serve as a training HUB for local community health workers using the Pathways service model.

Pathways Community Model

The Pathways Model is a national care coordination model designed to improve health outcomes for families with low income by connecting them to resources. Pathways takes the burden of navigating multiple systems of care off the individual and into the hands of a trained community health worker who can work with clients directly until positive outcomes are achieved. In this model, there are 21 outcome-based Pathways based on key health risk indicators and social needs.

Adult Education	Developmental Referrals	Employment	Family Planning
Healthcare Coverage	Housing	Immunization	Medical Home
Medical Adherence	Medical Reconciliation	Mental Health	Oral Health
Social Services	Pregnancy and Postpartum	Substance Abuse	Transportation

While some Pathways may be harder to complete than others, the services are provided based on the need(s) of the individual and/or family and the availability of local resources. This approach to holistic services has been successfully implemented in communities across the country and is now being piloted in four sites across Texas. [Learn more.](#)

The Role of the Community Health Worker

Community Health Connect is working hard to build a trust-based, relationship-oriented, and collaborative community health worker workforce. We feel strongly that local voices and partnerships are uniquely situated to reduce health inequities in areas that need it the most. We recognize that community health workers are a vital part of our vision to reach residents where they live, eat, play, work, and worship.

Through home and community visits, we see community health workers as bridging the gap between individuals, health care providers and community-based organizations. Community Health workers can take the burden of service navigation and health education off of the individual and work in partnership with individuals prioritizing their own health and well-being.

Return on Investment

We aim to improve the quality of health and well-being for individuals most at risk for poor health outcomes, while also reducing overall costs to Medicaid managed care organizations, hospitals, and health care providers.

Finally, this work provides communities with the information and tools they need to build equitable outcomes for all residents.



Community Partners



To learn more, please contact Pathways HUB Director Dorothy Light at Dorothy.Light@uwatx.org.