



United Way for
Greater Austin

IMPACT REPORT

July 2022 – June 2023



OUR MISSION

United Way for Greater Austin brings people, ideas, and resources together to fight poverty in our community.

OUR COMMITMENT TO DIVERSITY, EQUITY, AND INCLUSION

Race impacts all of us. It’s the single biggest predictor of a person’s education, health, and income.

To advance United Way for Greater Austin’s mission to fight poverty, we must stand up for racial justice.

THAT’S WHY WE COMMIT TO:

- Looking back to understand how we’ve contributed to racial inequality
- Changing unfair systems that prevent our community from reaching its full potential
- Embracing diversity, equity, and inclusion as individuals, as an organization, and with our community

United, we can create a community where everyone feels a sense of belonging. Join the journey and Live United!



Message from
CEO David C. Smith

Dear friends,

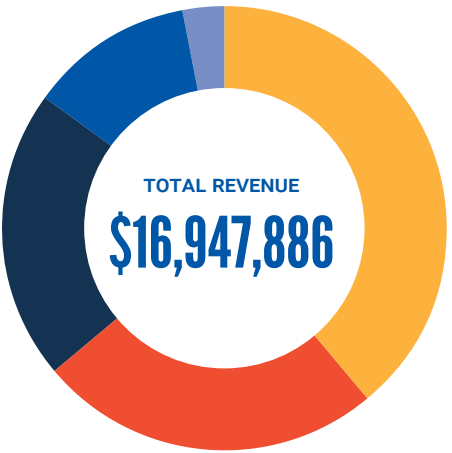
We live in the wealthiest nation in the history of the world, and in one of the wealthiest, most vibrant communities in our country. Yet too many of us are not yet a part of this extraordinary success story. Too many of us are struggling just to make ends meet, even while working full time. **Imagine with us a community where everyone can reach their full potential!** We can get there, which is why United Way is here, bringing us together to solve our region’s biggest challenges the only way we know how: United.

Our region continues to grow and change rapidly. We use data to ensure every dollar invested in our mission has the maximum impact and are thrilled to have recently completed a massive project: our 2-1-1 Data Dashboard that shows our region’s real-time needs and trends. Explore the dashboard at unitedwayaustin.org/dashboard-data-2-1-1 to see for yourself how many of our neighbors are reaching out for help. **For the first time ever, you can see the needs and trends in real time, searching by county, city, zip code, and area of need. We will continue to use this data to invest in long-term change that expands access to education and resources.**

It’s an exciting time at United Way. We are just wrapping up a strategic planning effort as we prepare to celebrate our Centennial in 2024. Be on the lookout for some exciting announcements and events. **As always, we want you with us every step of the way.** We want to lock arms with you to both celebrate this amazing community, and to envision and create the beloved community where everyone celebrates their place in the promise of this, our home.

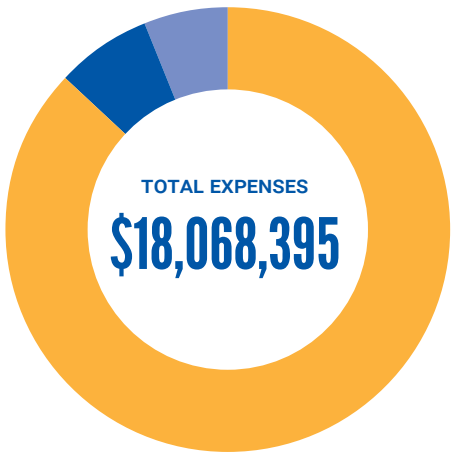
David C. Smith

FINANCIALS



Revenue

- 39% Foundations
- 25% Federal and State grants
- 21% Individuals
- 12% Companies
- 3% Other



Expenses

- 87% Programs
- 7% Admin
- 6% Fundraising

Total program expenses

\$15,679,485

Grants: \$2,170,000

Education: \$7,030,876

Health: \$3,830,621

Financial stability: \$2,647,988

Total end of year net assets

\$16,238,685

87%

of every dollar goes to programs

100%

of every dollar goes to our mission of fighting poverty

Board of Directors

Mark Strama, Board Chair Annette Strauss Institute for Civic Life	Laura Huffman Civic Solutions Partnership
Kristin Marcum, Board Chair-Elect ECPR Texas	Bobby Jenkins ABC Home & Commercial Services
Jennifer Poppe, Board Treasurer Vinson & Elkins— Retired	Dr. Anjum Khurshid Harvard Medical School
Blake Absher Broadway Bank	Ed Latson Austin Regional Manufacturers Association
Jeremiah Bentley Texas Mutual Insurance Company	Amanda Luther Boston Consulting Group
Dr. Joshua Childs University of Texas at Austin	Hon. Rudy K. Metayer City of Pflugerville
Mollie Duckworth Latham & Watkins	Abbi Miller St. David’s HealthCare
Allison Dwyer Community Advocate	Dr. Sarojani Mohammed Ed Research Works; Capacity Catalyst
Andy Esparza Community Advocate	Malini Rajput Capital One Bank
Jennifer Foster Dell Technologies	Yvette Ruiz JPMorgan Chase
Jay Fox Baylor Scott & White Health	Scott Rust NI
Ryan Frederick Here	Michele Scott Square Move Realty
Michele Glaze Samsung	Karen Steakley Tesla
Kristie Gonzales KVUE	Charles Thornburgh Kinjo
Jehmu Greene Barbara’s Legacy; We Defend Truth	Jeff Vernor Dimensional Fund Advisors
Cristina Guajardo Guadalupe Neighborhood Development Corporation	Alison Walgren Deloitte
Cathy Harm H-E-B	Jennifer Wu Kirkland & Ellis
John D. Holmes Forcepoint	

OUR IMPACT

Where Your Dollars Go

Together with generous neighbors like you, here are some of the things we accomplished in the past year across the Central Texas region.



645

families supported with 2-Gen approaches that serve parents and children simultaneously, which leads to better financial outcomes for both generations



1,416

volunteers mobilized to connect with our community

5,358 volunteer hours

\$159,975 value of volunteer time



200,000+

requests for help answered through our Navigation Center

64,369

children and individuals impacted through our strategic work in education, health, and financial stability



1,017

families with newborns supported with a Family Connects visit

98.8%

of families had at least one risk addressed during the visit

\$8,294,424



invested directly into our local community, including \$2,170,000 in Community Investment Grants and \$2,777,592 in other grants throughout the year

Provided cancer care to 12 patients through Addressing Cancer Together



Put over

90,000

(and counting!) books in the hands of young readers



120+

volunteers mobilized to advocate for early childhood education during the Texas Legislative Session, resulting in a \$74.2 million increase in funding for early childhood programs



Leveraged over

\$1,108,065

in city, county, state, and corporate funding to support Pre-K Partnerships, a collaboration with Austin and Round Rock ISDs



195 students served with 85% identifying as BIPOC and one in three being bilingual



92% of students were developmentally on track for language at the end of the school year (up from 63% at the start of the school year)



89% of students were developmentally on track for literacy at the end of the school year (up from 59% at the start of the school year)

What is collective impact?

A collaborative approach involving multiple stakeholders from various sectors working together to address complex social issues and drive systemic change. This is a key strategy United Way uses to advance our mission, build opportunity, and break the cycle of poverty in our community.

COLLECTIVE IMPACT:

- 1
- Starts with a common agenda
- 2
- Establishes shared measurement to track progress
- 3
- Fosters mutually reinforcing activities
- 4
- Encourages continuous communications
- 5
- Has a strong backbone organization that coordinates and supports the work



By harnessing the power of collective impact, United Way maximizes our impact and contributes to lasting systemic change across our region.

Meet our Coalitions

United Way convenes several coalitions, using a collective impact model, to advance our mission and impact.

AUSTIN / TRAVIS COUNTY

Success By 6 Coalition

753 child and family advocates
124 companies



Ensure children enter Kindergarten happy, healthy, and ready to succeed in school and beyond



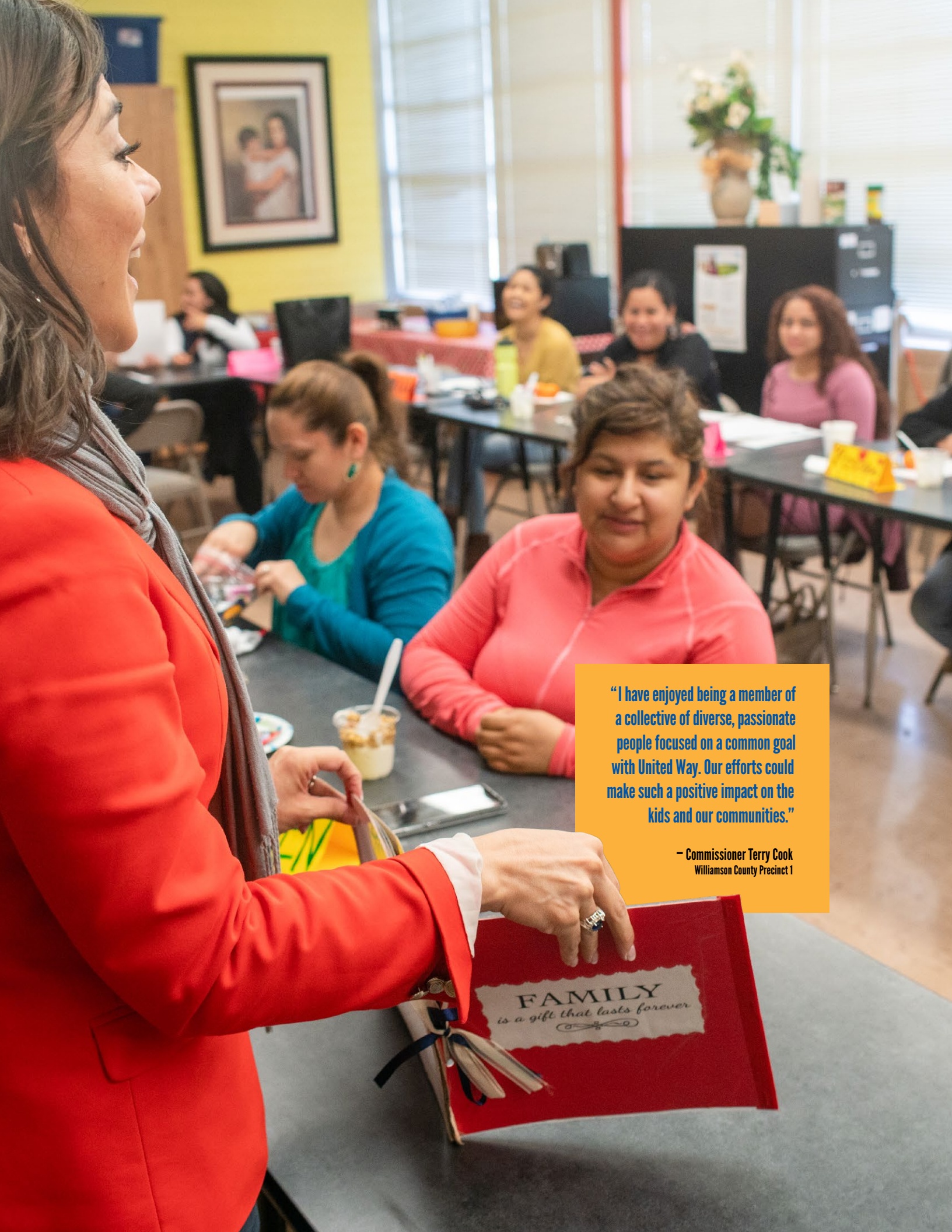
Austin Public Health Child Inc.
Travis County Research and Planning
Workforce Solutions Capital Area

Key wins from the year

- Increased City and County funding to **\$328 per child** from low-income family
- Launched the only regional Shared Services Alliance for child care centers in Austin/Travis County, providing business coaching, supporting recruitment, technical assistance, and more
 - 26 child care centers** already participating
- Austin/Travis County was selected as one of four Texas communities to receive a Help Me Grow grant to help families and caregivers better navigate the local early childhood system and other resources
- Expanded supports and resources for family-based child care programs, through the implementation of ARPA-funded initiatives
 - 36 family-based child care homes** graduated from the AVANCE Quality Child Care Matters cohort and 8 of these graduates are pursuing a quality rating through the Texas Rising Star rating system



Local students participating in a literacy event hosted at Freedom Schools, a United Way community partner



“I have enjoyed being a member of a collective of diverse, passionate people focused on a common goal with United Way. Our efforts could make such a positive impact on the kids and our communities.”

— Commissioner Terry Cook
Williamson County Precinct 1

WILLIAMSON COUNTY

Success By 6 Coalition

66 stakeholders | 35 organizations

GOAL Ensure children enter Kindergarten happy, healthy, and ready to succeed in school and beyond

Key wins from the year

- **Launched** the coalition
- Completed and published a **strategic plan**
- Formed **4 workgroups**, in alignment with the strategic plan, that have begun meeting and advancing our collective goals

KEY PARTNERS

The Georgetown Project
Lone Star Circle of Care
Opportunities for Williamson & Burnet Counties
Williamson County and Cities Health District
Several of the 12 Independent School Districts in Williamson County

GREATER AUSTIN

Reading Coalition

84 stakeholders | 40 partners

GOAL Ensure children grades K-3 are reading on grade level by the third grade – a pivotal point in a child’s reading development

Key wins from the year

- **More than doubled** the number of parents/caregivers participating in learning and engagement opportunities in literacy
- Hosted more than **300 family literacy events**
- Put more than **90,000 books** in the hands of young readers

KEY PARTNERS

Book Days | BookSpring
Read the Room | Welcome Table

AUSTIN / TRAVIS COUNTY

2-Gen Coalition

A 2-Gen (or 2-Generation) approach to social services serves parents and children simultaneously and leads to better financial outcomes for both generations

274 stakeholders | 67 partners

GOAL Strengthen and expand 2-Gen services and resources for local families

Key wins from the year

- Launched **coalition strategies** in creating supported pathways to Austin Community College, growing entrepreneurship programs, and improving access to affordable child care
- Documented **progress in improvements** like collecting data on parenting status, providing additional supports for parenting students, and using family voice to improve programs and processes
- Provided **input in community-wide efforts**, like Workforce Solutions’ evaluation of child care access and Travis County’s survey of community need

KEY PARTNERS

Austin Urban Technology Movement
Capital IDEA | Dream Come True Foundation
Todos Juntos Learning Center

WILLIAMSON COUNTY

Community Health Connect

8 partners

GOAL Improve health outcomes and expand access to resources for local families

Key wins from the year

- United Way **became the backbone** for the Accountable Community of Health Initiative in Williamson County
- Received additional grants and sponsorships for over **\$600,000 in funding** for the next three years
- Began services for **pregnant and postpartum moms** in Williamson County to ensure families have resources necessary for healthy birth outcomes
- Launched a **Food Security Workgroup** with local partners across the county

KEY PARTNERS

Ascension Seton | Georgetown Health Foundation
Lone Star Circle of Care | STARRY
Williamson County and Cities Health District

WILLIAMSON / BASTROP / HAYS

Addressing Cancer Together

15 partners | 100 stakeholders

GOAL Reduce burden of cancer on families and communities, by expanding access to cancer screening, diagnosis, and treatment

Key wins from the year

- Connected **12 women across 3 counties** to breast cancer treatment, paid their bills, and supported them to apply for financial assistance to erase their charges
- Leveraged **public and private funds**
- **Awarded 2 contracts** for outreach

KEY PARTNERS

Ascension Seton
Austin Radiological Association
Community Action Inc. of Central Texas
Lone Star Circle of Care
St. David’s HealthCare
Texas Oncology

AUSTIN / TRAVIS COUNTY

Model Community

88 partners and stakeholders

GOAL Improve health outcomes, address disparities, and transform systems so they work better for those seeking help

Key wins from the year

- Completed the **MEASURE CARE Model**, a community-led strategic planning process focused on data
- Launched application for **Model Community Advisory Council**
- Launched **Engagement Grants for BIPOC-led organizations**

KEY PARTNERS

Connxus
Hungry Hill Foundation
MEASURE
People’s Community Clinic
Sustainable Food Center

Driving Impact With Data

When United Way shares what we know and what we're learning, we provide our community with powerful tools. That's why we gather, analyze, and share critical data about needs and trends here in Greater Austin.

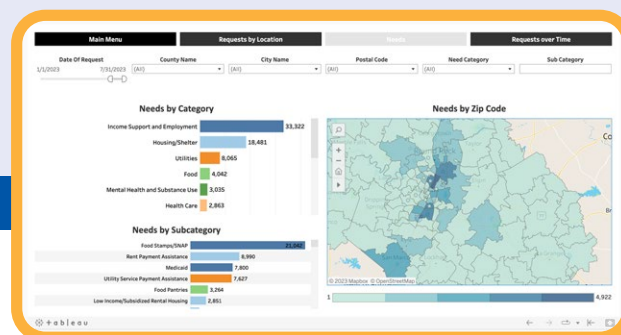
Our Navigation Center, which includes 2-1-1 and ConnectATX, is a vital entry point for those struggling to navigate the complex system of health and human services in Central Texas.

This year we answered over 200,000 requests for help.

Includes 2-1-1, ConnectATX, Bluebonnet Trails

TOP NEEDS FROM THOSE SEEKING HELP IN OUR REGION

- 1 Housing/Shelter
- 2 Utilities
- 3 Food
- 4 Income Support and Employment
- 5 Health Care



2-1-1

- ▶ More than 25 years
- ▶ Provided free navigation to more than 30,000 nonprofit and government resources
- ▶ In 10 counties
- ▶ For food, health, child care, employment, housing, transportation, disaster relief, and more



2-1-1 is a nationally accredited program

This year, we received an award for unprecedented call quality, due to the professionalism, expertise, and compassion of our call specialists.

For the first time ever, you can see the needs and trends in real time, searching by county, city, zip code, and area of need.

Explore our new 2-1-1 Data Dashboard to see the real demands for health and human services in our region. unitedwayaustin.org/dashboard-data-2-1-1

DATA TRENDS IN OUR REGION

1. Affordability

Top costs for families Housing and child care

Housing

Greater Austin has been experiencing significant affordability challenges due to its rapid population growth, thriving tech industry, and limited housing supply. This has led to rising housing costs and concerns about housing affordability for both renters and homeowners.

Over the last 5 years

- ↑ rent has increased **19%**
- ↑ the average home cost has increased **40%**
- In comparison, median family income has increased by **only 19%**

Child care

Child care in Travis County is more expensive than anywhere else in the state

- ↑ Facilities costs have increased 20-40%
- ↑ Wage costs have increased 60-80%
- In Williamson County, average cost of infant care is **\$10,660 annually**
- In Travis County, average cost of infant care is **\$12,740 annually** – almost \$2,000 more than the annual cost of tuition at the University of Texas

2. Child care labor shortage and availability

Teacher shortages make it difficult for centers to provide care to children and to provide high-quality care.

For child care teachers

- Average hourly pay **\$18.55**
- Living wage hourly pay **\$20.80**

Based on a survey of local providers conducted by our team in 2022

- 89%** of centers had difficulty hiring in the previous 6 months
- 75%** of centers had staff vacancies

Staffing shortages resulted in:

- 43%** were open only limited hours
- 56%** were under-enrolled
- 94%** of those who were under-enrolled had a waitlist

In Texas

- **55%** of parents who voluntarily leave their jobs do so when their child(ren) is two years old or younger, indicating that child care for infants and toddlers is a great need
- **70%** of non-working middle skilled parents cite child care as one of the top 5 reasons for not participating in the workforce

3. Winter storms and summer heat

Requests for help related to cold weather, including winter storms, were as high in 2023 as in 2022. United Way answered over **380 requests for help** related to cold weather between December 2022 and March 2023.

Requests for help related to heat – including air conditioning, fans, and cooling centers – were about **25% higher** in June and July of 2023, compared to the same months in 2022 and **80% higher** than 2021. United Way answered over **160 requests for help** related to the heat.

ConnectATX

- ▶ Since 2019
- ▶ Improves community care coordination through an online platform, helpline, and community partnerships

Key wins this year

- Over **46,000 activities** were done by ConnectATX Navigators to support the care management of clients
- Clients were connected to over **13,000 referrals**, with nearly 5,000 closed-loop referrals sent directly to community partners
- Nearly **115,000 searches** were placed on ConnectATX by over **32,000 people**
- Conducted nearly **1,000 non-medical drivers of health assessments** with nearly 50% of clients expressing a food need
- Over **1,600 clients** connected to resources that successfully met their need
- Launched **Helpline Referral pilot** with Lone Star Circle of Care to connect patients to social care resources necessary to improve health outcomes
- Launched **Intentional Quality Referral pilot** with Any Baby Can, Central Health, Central Texas Food Bank, El Buen Samaritano, Farmshare Austin & Sustainable Food Center, Lone Star Circle of Care, and WIC to optimize the effectiveness of closed-loop referral systems and care coordination

Early childhood education

in Travis and Williamson Counties

Every

\$1

invested in
early childhood
results in a

\$9

return on
investmentBased on research by
James Heckman

The first 2,000 days of every person's life are foundational. Studies show that a child's experiences during those early years literally build the architecture of their brain.

Early childhood education lays the groundwork for early development, academic achievement, economic productivity, and a lifetime of better health. That's why United Way unites the community around this common goal: All children enter Kindergarten happy, healthy, and prepared to succeed in school and beyond.

Together with our Success By 6 Coalition partners, here are some ways we advanced that goal in the past year.

Innovating in early childhood education through Pre-K Partnerships

Pre-K Partnerships is a collaboration between local school districts and United

Way for Greater Austin to support and expand access to high-quality full-day pre-K in our community. In the past year, we attained an **87% teacher retention rate**—the highest rate to date—and **increased enrollment in Pre-K Partnerships from 107 to 195 students**.

We also launched our first pre-K3 partnerships in Round Rock ISD through two child care partners, and **expanded the number of participating centers from 13 to 18**.

To increase financial supports for our partners, we leveraged **\$574,787** in untapped Texas Education Agency funding for partner centers, and supported 10 new classrooms with **\$250,000** in Texas Workforce Commission funding.

Advocacy led to increased public funding

Through our advocacy efforts, we saw an increase in City and County spending on early childhood development and learning, including \$16 million in American Rescue Plan Act (ARPA) funding. With ARPA funding, the amount of funding per child more than doubled from the previous year. City and County funding per low-income child continued to increase, especially with the continuation of ARPA funds.

\$328 per child from low income family
\$882 with ARPA

"United Way's Pre-K Partnerships provides resources for us to be able to recruit and retain highly qualified teachers and give us resources to raise the quality in all our classrooms. I trust United Way because I have worked with them for many years, and they have a commitment to this community [and] a passion for helping young children reach their potential even before they're six years old."

— Kathy Smith
Executive Director of Shoreline Early Learning Center



Growing impact

in Williamson County

“

The collective impact work between Williamson County and Cities Health District/Healthy Williamson County (WCCHD/HWC) and United Way has been integral in catalyzing systems-level change for Williamson County's most vulnerable residents. This collaboration will help guide us in conducting research in food processing, food waste, and food recycling, specific to Williamson County. It truly takes effective relationship building, communication, and trust to align agendas, share data, and work in the collective impact space, and United Way is leading the way.

– Valerie Zapfen
Healthy Williamson County Coordinator

In January 2022, United Way for Greater Austin and United Way of Williamson County joined forces and merged.

Through this merger, we have expanded our mission and impact with a regional approach, which helps us better and more efficiently serve a broader community across Greater Austin and Williamson County. In short, it means more people right here in our community are getting the help they need.

Here are just a few examples of our work in Williamson County in action.

Expanding high-quality early childhood education

Building on our success improving early childhood education in Austin/Travis County, we now convene a Success By 6 Coalition in Williamson County – with the shared goal to ensure all children are happy, healthy, and ready to succeed in Kindergarten and beyond.

35 organizations

4 parents with lived experience

66 additional community leaders

We also partner with Round Rock ISD to provide pre-K to 3-years-olds. The Pre-K Partnerships program expands access to high-quality pre-K, supporting local child development centers to improve and sustain quality services for children. Round Rock ISD is now set to serve over 50 pre-K3 students in 2023-24.

Research shows that pre-K increases student enrollment and academic performance. Children who attend pre-K are more likely to enter Kindergarten ready to succeed and are more likely to pass their 3rd grade STAAR assessment.

Today's children are tomorrow's neighbors, workers, and leaders – and all of these efforts will help our youngest Williamson County community members reach their full potential.

Investing in fellow nonprofits doing great work

We continue to invest in dozens of Williamson County nonprofit

partners aligned with our mission to fight poverty working in the areas of education, health, and financial stability.

\$470,000 in funding

36 nonprofits (13 education, 17 health, 6 financial stability)

Our Community Investment Grants are made possible by the donations of thousands of community investors each year, and we are committed to serving as a strategic steward of these dollars.

Supporting the health of our community and everyone in it

To better connect our community to affordable healthcare and improve health outcomes, we convene Community Health Connect, a cross-sector collaborative expanding access to resources for Williamson County families. We are building a network of certified community health workers (CHWs) who will provide in-home care coordination, social service navigation, health education, and advocacy. The CHWs look at everything a family needs to stay healthy, including housing, healthy food, medical care, health insurance, safety, transportation, education, employment, and more.

10 partners engaged

“I find great value in the way the coalition brings together organizations, school and government leaders, and parents to work together to improve outcomes for young children. I have gained a deeper understanding in what resources are available and what resources are lacking. To solve the challenges that Wilco families are facing, the community will need to work together. Through collective impact, we can bring real change for families.”


– Lexy Largent The Georgetown Project




If You Give a Child a Book: A Book Days and Greater Austin Reading Coalition Collaboration

Instilling a love of reading in kids is critical to ensuring more children are reading at or above their grade level – a core piece of United Way’s work to break the cycle of poverty in our community. That’s why the Greater Austin Reading Coalition, powered by United Way, has partnered with Book Days, a local children’s literacy program, to host book tours for students at Title 1* schools.

Book Days’ mission is to encourage a love of reading in children by making reading exciting and bringing books to life. The program does this through theatrical performances and a variety of multi-sensory activities to engage and excite students. In partnership with the Greater Austin Reading Coalition, they launched their first tour across Austin ISD in February 2023.

 **1,500+**
children reached

 **8**
schools in Austin ISD

The tour featured the beloved classic *If You Give a Mouse a Cookie*, by Laura Numeroff. In just three days, the program reached over 1,500 children at eight schools in Austin ISD. At each stop, children participated in a theatrical reading of the book by the mouse himself. Throughout the tour, students not only improved their reading skills, they grew their passion for books.



Meet Adriana: A Story of Inspiration from United Way’s Parenting Students Project

“I went to visit family and when we came back our house had been broken into. I found all of our belongings on the front lawn thrown away like trash, down to the food in our fridge. I failed all five of my classes, and when you have a child and you’re homeless, you just really have to focus on the day’s needs.” – Adriana, Parenting Students Project participant

Parenting students work hard every day to pursue their goals, juggling caregiving, course work, and sometimes multiple jobs to build a better life for their families. Because of the obstacles they face, parenting students are nearly twice as likely to leave school for preventable reasons: lack of child care, conflicting course and work schedules, and even convenient transportation.

Parents like Adriana, who faced a nightmare situation that resulted in homelessness and perpetuated the cycle of poverty. That is until she joined the Parenting Students Project.

Adriana found hope with United Way’s Parenting Students Project. A partnership between United Way and Austin Community College, the Parenting Students Project supports parenting students, ages 18-29, with incentives to accelerate their post-secondary education.

“If this opportunity hadn’t presented itself, I think my life would be at a standstill. By educating this one person or helping to make their road to education smoother, you’re allowing them to touch the lives of thousands of people.”

“United Way’s Parenting Student Project is helping me be a better person and a better mom to my child. Being able to go to school and work towards a goal that I wanted for so long means a lot to me.”

Now, Adriana is working toward her dream of becoming a trilingual sign language specialist to help bridge the gap between deaf and hearing Spanish-speaking families. “United Way’s Parenting Student Project is helping me be a better person and a better mom to my child. Being able to go to school and work towards a goal that I wanted for so long means a lot to me.”

Removing the barriers parenting students like Adriana face helps them continue on education pathways to living wage employment, which changes their lives as well as their children’s lives. In fact, a \$3,000 difference in parents’ income while a child is young leads to a 17% increase in that child’s future earnings.

We support parents like Adriana in getting through their times of need and solve the systemic issues that prevent them and their children from thriving in the future with independence, dignity, and well-being.

“I have been so privileged to partner with the Greater Austin Reading Coalition! The support of the team and sponsorship of the tours has been the catalyst for providing thousands of underserved children in our community with a literary experience they will never forget. I am so thankful that United Way has been with us since the conception of this initiative. I look forward to working together in the future to continue spreading the joy of reading.” – Kassi Kincaid, Founder of Book Days

In the coming year, the Greater Austin Reading Coalition looks forward to partnering with Book Days for even more reading tours that build a culture of reading for fun and cultivate a love of books in children.

The Greater Austin Reading Coalition is convened by United Way for Greater Austin as part of the organization’s collective impact work to fight poverty.

*Title I is a federal program that provides financial assistance to schools with high percentages of children from low-income families, to help ensure that all children meet academic readiness requirements.

Join Us, AND LIVE UNITED

You can make a difference. United, we can build a community where everyone reaches their full potential. One where every child is set up for success with high-quality early care and education. A community where everyone is connected to essential resources they need, when they need them. **Join our movement today.**



Give

When you donate to United Way, your dollars stay local to make a real and lasting impact for people in our Greater Austin community. Every dollar makes a difference.



unitedwayaustin.org/give

Advocate

Your voice matters. By bringing together the community to support evidence-based policy aligned with our strategic work, we are building a region that works for everyone. Join thousands of our supporters in sharing your voice and watch real change happen.



unitedwayaustin.org/advocate

Volunteer

As an individual or as a team, you can use your time to create real social change while connecting with your community. We bring together a network of volunteers across the Greater Austin area, providing opportunities to meet your neighbors who are passionate about giving back.



unitedwayaustin.org/volunteer



A sold-out crowd of nearly 400 people came out to A Night United in April 2023, in support of United Way's work breaking the cycle of poverty

Give United, Live United JOIN A DONOR NETWORK.



unitedwayaustin.org/donor-networks

Emerging Leaders

Aspiring philanthropists learning, leading, and networking as ambassadors for United Way and changemakers in Central Texas.

Join by donating \$250 (\$21/month) or more annually.

Emerging Leaders Executive Committee Chair
Arielle Sadler, Texas Mutual Insurance Company

Leaders United

Community leaders building opportunity for local children and families.

Join by donating \$1,000 (\$83/month) or more annually.

Women United Executive Committee Co-Chairs
Tracy Fielder, Community Advocate
Erika Laughlin, Deloitte

Women United

A vibrant and powerful women-driven philanthropic force supporting United Way's work to break the cycle of poverty across Central Texas.

Join by donating \$1,200 (\$100/month) or more annually.

Women United Executive Committee Co-Chairs
Tracy Fielder, Community Advocate
Erika Laughlin, Deloitte

Tocqueville United

A group of philanthropic leaders passionate about tackling the most pressing challenges in Greater Austin.

Join by donating \$10,000 or more annually.

Champions Circle:
A gift of \$25,000 annually
Tocqueville United:
A gift of \$10,000 annually

Co-Chairs
Mollie Duckworth, Latham & Watkins
Newton Wong, Deloitte

Donor networks connect people who are passionate about doing good in our community. You'll be part of a community of like-minded leaders making an impact through philanthropy, volunteerism, and advocacy. Members also gain access to exclusive donor network events, all created for and crafted by your network.

Our CORPORATE PARTNERS UNITED FOR IMPACT

United Way partners with hundreds of businesses to help them achieve their philanthropic goals – and we've been doing it for nearly 100 years. Thank you to our corporate partners below for building opportunity to break the cycle of poverty, unlocking the potential for Central Texans today and tomorrow.

Impact \$1,000,000+



Connect \$250,000+



Inspire \$100,000+



Unite \$50,000+



Transform \$25,000+



Thrive \$10,000+



Premier Event Sponsors



Media Partners



Thank you,
PARTNERS!



We're proud to partner with



Thank you,
COMMITTEE MEMBERS!

Funding partners



Finance Committee

Jennifer Poppe, Chair, Vinson & Elkins – Retired
Marie Baker, SBS Global
Dan Ellinor, The Bank of Austin
Craig Fegley, Chase – Retired
Tracey Guidry Cooley, Deloitte
Scott Rust, NI
Donald Schwent, Enterprise Holdings
Jeff Vernor, Dimensional Fund Advisors

Impact Committee

Allison Dwyer, Chair, Community Advocate
Caitlin Arenas Martinez, A Martinez Consulting
Dr. Joshua Childs, University of Texas at Austin
Andy Esparza, Community Advocate
Dr. Liz Gershoff, University of Texas at Austin
Jehmu Greene, Barbara's Legacy; We Defend Truth
Sonia Hamstra, AIG Investments – Retired
Dr. Aletha Huston, University of Texas at Austin
Marie Krebs, Marie Krebs Consulting
Dr. Sarojani Mohammed, Ed Research Works; Capacity Catalyst

Mark Steiger, Optum Everycare
Reyda Taylor, Travis County
Fred Tedesco, KPMG – Retired
Dr. Raphael Travis, Texas State University
Newton Wong, Deloitte

Marketing Committee

Jeremiah Bentley, Chair, Texas Mutual Insurance Company
Catherine Clark, NetLine
Carla Delgado, Page 33 Studio
Frances Jordan, Rifeline
Deeda Lovett, Community Impact
Kristin Marcum, ECPR Texas
Enrico Meyer, KVUE
Nico Ramsey, ECPR Texas
Roger Rowe, NetWerks
Michele Scott, Square Move Realty
Nichole Valdez, H-E-B
Julie Velky, Nerderly
Andrea Vick, Gannett

Resource Development Committee

Ed Latson, Chair, Austin Regional Manufacturing Association
Blake Absher, Broadway Bank
Patty Bloom, Deloitte
Bre Brown, JLL
Judy Cantilo, Community Advocate
Patrick Cantilo, Cantilo & Bennett, LLP
Michele Glaze, Samsung
John D. Holmes, Forcepoint
Marianne Rochelle, Community Advocate
Yvette Ruiz, JPMorgan Chase
Arielle Sadler, Texas Mutual Insurance Company
Chuck Swartz, Marsh McLennan
Van Vo, Community Advocate
Alison Walgren, Deloitte

Wilco Community Investment Council

Andrew Bennett, Baylor Scott & White Medical Center – Round Rock
Dr. Sarah M. Brackmann, Southwestern University
Bridget Brandt, Leander Chamber of Commerce & Visitors Center
Mark Brody, Brohawk Solutions
Cynthia Flores, Annunciation Maternity Home
Dr. Caroline Hilbert, Williamson County and Cities Health District
Hon. Diana Maldonado, Maldonado Strategies
Paco Martinez, UFCU
Brittney S. Rodriguez, Greater Austin Hispanic Chamber of Commerce
Amin Salahuddin, EIXSYS Healthcare System & EIXSYS
Saridon Stanton Rabb, City of Cedar Park
Don Tracy, Austin Community College

**Thank you to the
thousands of donors,
advocates, and
volunteers who make
this impact possible.**



Join us and Live United.

unitedwayaustin.org/get-involved